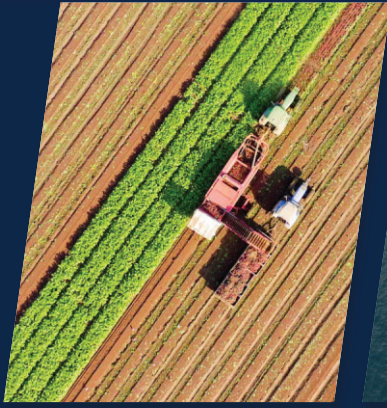




Balanced risk taking for  
strength & stability.





# CONTENTS

Our Roots	3
Who We Are	4
Our Services	5
Life & Health	6
Addressing Emerging Risks	7
A Testament of Our Commitment	9
Our Strength	10
The Team	11
Training & Development	13
CSR and ESG	14
Careers	15
Contact us	16



# Our Roots

Emeritus Reinsurance was born out of Zimre Holdings Limited (ZHL) in 1983, through an Act of Parliament, the Zimbabwe Reinsurance Corporation Act [Chapter 24:17] and started transacting reinsurance business in 1984. Through Legal cessions and commercial trading, the company grew into a diversified group with investments in Reinsurance, Reassurance, Insurance, Property, Insurance broking, Reinsurance broking both locally and regionally.

The unbundling exercise of the ZHL Group enabled the reinsurance arm to thrive in the various countries as Baobab Reinsurance (Zimbabwe), First Re (Botswana), Zimre Malawi (Malawi), Zimre Mozambique (Mozambique) and Zimre Zambia (Zambia). In line with its longevity, excellence and expertise, the Company re-branded in 2018 to Emeritus Reinsurance signifying excellence, experience, efficiency, and security.

*“Emeritus Reinsurance represents excellence, experience, efficiency, and security.”*

## Our Journey in time

1983

Zimbabwe Reinsurance Corporation established.

1998

Zambian Reinsurance Company Limited established as the first resident reinsurer in Zambia.

1999

Zimbabwe Reinsurance Corporation commercialized and subsequently privatized.

2002

Unbundling and Restructuring.

2003

Demerger of the reinsurance operations from the Head Office and ZimRe Reinsurance Private Limited (the Group's reinsurance flagship) is borne.

2017

Baobab Reinsurance consolidated its Reinsurance and Life and Health company and registered under a composite license.

2009

Zimre Mozambique changed name to Mozre Moçambique Resseguros.

2008

ZimRe Reinsurance Private Limited rebranded to Baobab Reinsurance Private Limited.

2007

Zimre Life & Health fully separated from Zimre Reinsurance and separately registered.  
Zimre Mozambique registered.

2004

Zimre Malawi fully established after operating as a branch from 1995.

2018

Monobranding of all units to Emeritus Reinsurance.

2023

Regional Reinsurance structure consolidation under Emeritus International (Botswana)



# Who We Are

## Our Purpose

The Emeritus Reinsurance brand is associated with evolving, enriching, and relevant risk solutions for short-term and life and health insurance services.

Emeritus Reinsurance commands a unique business model of a network of established and efficient subsidiary offices within Southern Africa, being the only group with such a network in the region. Emeritus Reinsurance believes in bringing risk solutions closer to home, hence the expansive network business model.

## Our Promise

Emeritus Reinsurance is in the "game for the long term. We do not take away the umbrella when you need it most. "Our continued presence in different markets and uninterrupted partnerships with direct insurance companies is a testimony of our belief in establishing, promoting, nourishing, and cementing long-term partnerships that are beyond tomorrow.

## Our Reach

Over its 40 years of business, Emeritus Reinsurance has been influential in the establishment of key insurance and reinsurance entities in Zimbabwe and the region. Emeritus Reinsurance believes in the power of education in creating sustainable wealth. Accordingly, through its robust training and development programs and partnerships with the ZHL Group, Emeritus Reinsurance has groomed many of today's leading insurance experts in Africa.

## Our Values

We dedicate our excellence, efficiency and experience to provide perfect risk solution for your business needs.



# Our Services

## General Reinsurance Services

As a Reinsurer, Emeritus Re assumes a similar risk profile to its clients, with the added advantage of economies of scale, balance sheet strength, technical expertise and experience. Emeritus Re provides competitive pricing, support in risk management and tailors specific solutions that enable clients to grow, thrive and prosper in the insurance space.

Emeritus Re is cognizant of climatic change, technological developments and other extraordinary new and emerging risks that are in the insurance space. The company partners with clients in providing expertise in special risks as required. Our partnership transcends providing reinsurance cover and extends to availing our proficiency in product development, policy wording structures, risk identification, profiling, mitigation, pricing, and assessment throughout the value chain.

Pursuant with our group objectives, we strive to excel in delivering value for our clients through our technical services, skills development, and product development. Our service turnaround times and terms seek to ensure our clients remain competitive in their various spheres as we leverage on the various digital solutions to remain accessible and available on call.

## Risk Management Services

Emeritus Re is involved in risk management training, pre-loss surveys and post loss surveys. Training and pre-loss surveys are aimed at ensuring there is reduction in economic waste and the post loss surveys are critical in that recommendations are made (and implemented) which will either prevent recurrence of losses or that the likely impact is reduced both in size and scale.





## Life and Health Services

Life and Health services provide reinsurance solutions to diverse client needs and requirements specific to life and health insurance. Being life reinsurance solutions providers, we are just like our clients in the risk assumption business. This shared perspective, together with our vast industry knowledge and expertise, enables us to understand and evaluate the different types of risks and hence propose the perfect reinsurance solutions which are flexible and tailored to meet our clients' peculiar needs.

We provide treaty and facultative reinsurance solutions in support of the underlying products that our clients underwrite in the broad categories of Individual Life, Group and Health Businesses.

Our product offerings include proportional and non-proportional reinsurance solutions designed to achieve cost efficiency, capital efficiency and to enable our clients to maintain their required solvency.

Pursuant to the group objectives we seek to provide excellent value for our clients through technical services such as underwriting claims assessment, skills development and product development. Our service turnaround times for underwriting and claims are structured to ensure that our clients remain competitive in their various spheres.





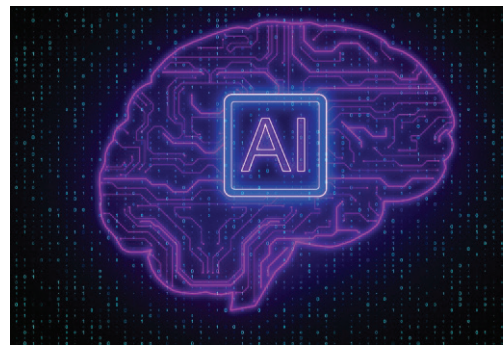
# Addressing Emerging Risks

*The identification and management of emerging risks are vital components of risk management in modern business operations. Emerging risks are yet fully understood but have the potential to significantly impact businesses and industries in unprecedented ways.*

*As a dedicated risk management team, Emeritus Re is committed to identifying and addressing emerging risks that can potentially affect our clients and industries across the globe. We acknowledge the evolving nature of risks and the importance of staying ahead of the curve to provide comprehensive coverage and protection.*

## Cyber Threats and Data Breaches

The prevalence of cyber threats and data breaches presents a significant risk to businesses, with potentially devastating consequences such as significant financial losses, reputational harm, and regulatory repercussions. To address these risks, we offer specialized cyber insurance solutions that cover the expenses associated with data breaches, cyber-attacks, and other related perils. Our team of experts works closely with businesses to assess their unique needs and provide tailored coverage solutions that address their specific risks. We utilize industry-leading practices to ensure that our policies remain relevant and up-to-date with the rapidly evolving cyber threat landscape.



## Emerging Technologies and Innovations

The rapid evolution of groundbreaking technologies, such as artificial intelligence, autonomous vehicles, and biotechnology, introduces new and dynamic risks. Through collaboration with esteemed industry leaders and subject matter experts, we provide individually tailored risk solutions that effectively mitigate the distinctive risks inherent in these emerging technologies.

## Emerging Health Risks

Health risks that emerge unexpectedly, such as pandemics, can have serious repercussions for individuals and communities. Our organization provides an extensive range of health reinsurance solutions, aimed at addressing such risks in a comprehensive manner. Our products and services aim to ensure that our clients have the necessary protection and support during challenging times. Our commitment to providing

reliable and effective reinsurance solutions is a testament to our unwavering dedication to our clients.

## Climate change risks

The escalating frequency and severity of droughts, floods, and extreme weather events present substantial challenges to sustainable development. Climate change and environmental hazards encompass a broad spectrum of challenges stemming from both human activities and natural processes. Emeritus Re acknowledges the imperative of addressing these hazards and incorporates climate change considerations into our risk management protocols.

## Our Approach to Emerging Risks

Our proactive approach to risk management ensures that we stay ahead of emerging risks, thereby enabling us to offer our clients the best possible protection.

1

Risk Assessment and Underwriting

2

Claims Responsiveness

3

Collaboration and Partnerships

4

Risk Mitigation and Loss Prevention

5

Commitment to Innovation



# A Testament of Our commitment

## Emerging Risks Claims Paid

Cyclones

USD 8,011,501

Tobacco  
Hail

USD 3,707,461

Covid 19  
Claims

USD 1,467,569

“ ”

With **40 years** of experience, we are re-invigorated to exceed your expectations and support your growth and prosperity.

# Our Strength

Emeritus Reinsurance has got encyclopedic knowledge of African markets, built through partnerships with both insurers and reinsurers across the continent, and a deliberate policy of establishing subsidiaries in selected regions. The more than 40 years' experience in the reinsurance business, diverse and skilled employee base, and innovation remain the key attributes that have contributed to achieving success in delivering dynamic, flexible and client-centric reinsurance and risk management solutions.

GWP USD  
NET CLAIMS  
COMMISSIONS  
PAID



## GCR Rating A-

### Underwriting Capacity 2024

FACULTATIVE	CAPACITY USD
FIRE	\$ 72,500,000
ENGINEERING	\$ 55,000,000
CASUALTY	\$ 18,000,000
MARINE	\$ 17,000,000
Motor	\$ 3,550,000
PVT	\$ 9,300,000

TREATIES	CAPACITY USD
FIRE	\$ 37,000,000
ENGINEERING	\$ 25,500,000
CASUALTY	\$ 10,000,000
MARINE	\$ 8,000,000
Motor	\$ 500,000



# Our Dedicated Team



**Tarupiwa Tarupiwa** | Zimbabwe

Tarupiwa Tarupiwa is the Managing Director of Emeritus Reinsurance Zimbabwe, bringing over 20 years of distinguished reinsurance industry experience. He holds a Degree in Business Studies and an MBA from the University of Zimbabwe and is an Associate of the Chartered Insurance Institute (ACII) of London.

Tarupiwa joined Zimre Group in 1997 and rose through the ranks to Managing Director. His strategic acumen drives excellence as Emeritus Re continues its trajectory towards Africa domination.



**Christopher Mukwindidza** | Malawi

Christopher is an Associate of the Insurance Institute of South Africa (ACII) He holds a Bachelor of Business Administration and a Master of Business Administration degree.

He is an amenable seasoned underwriter with over 20 years' experience with Zimre. He joined Emeritus Malawi in 2008 as Technical Director and became the Managing Director for Malawi effective 1 June 2013.



Patience Mashaire Marwiro | Botswana

Patience is an Associate member (ACII) and a Fellow of IISA (FIISA). She holds a Master of Business Administration, a Master of Science in Risk Management and Insurance and a Bachelor of Science Honours degree. She also holds a Diploma in Technical Insurance from the Insurance Institute of Zimbabwe and qualifications in Leadership and Management. She has over 20 years relevant experience in reinsurance operations in Zimbabwe and Botswana. She joined Emeritus Botswana, then First Reinsurance Company, at its inception in 2010 as the Managing Director.



Webster Chigwende | Zambia

Webster is an Associate of the Chartered Insurance Institute (ACII). He holds a Master of Science in Strategic Planning, Master of Business Administration and a First Class Bachelor of Commerce Honours degree in Insurance and Risk Management. Webster has 24 years of reinsurance experience. He joined the group as an Assistant Underwriter and has risen through the ranks to the position of Managing Director (Zambia) effective 2011.



Mufaro Chauruka | Mozambique

Mufaro is a Fellow of the Insurance Institute of South Africa (FIISA). He holds a Bachelor of Business Studies (Honours) and Master of Business Administration from the University of Zimbabwe. He has 30 years of reinsurance experience. Mufaro spearheaded the formation of Emeritus Re Mozambique, formerly Mozambique Reinsurance Company as the Managing Director, effective 2007.

Mufaro is an Alternate Board member for OESAI. He is also a Board member of the Insurance Association of Mozambique where he is promoting localised marine cargo insurance and Agriculture Index Insurance in conjunction with the World Bank/IFC insurance for the benefit of the local market and government.



# Training & Development



**Based on our heritage of providing innovative risk solutions to protect growth and prosperity, at Emeritus Reinsurance, we believe in optimising potential and growing industry professionals. We are heavily involved in investing in training and rewarding graduates, whilst also providing expertise for people interested in the insurance industry.**

This we achieve through various industry and academic partnerships which include sponsorship of the Insurance Institute of Zimbabwe (IIZ) training programmes such as the Summer School which aims at developing key industry skills, partnering with various universities through sponsorship of academic excellence awards and direct industry training through various technical workshops.

As a complimentary service and to further the main business of Reinsurance, Reassurance and Risk Management, Emeritus Re assists its clients with training programs. The trainings are in the various classes of insurance, reinsurance and reinsurance products. However, tailor made training programs are available for Emeritus Reinsurance clients.

Emeritus Reinsurance also hosts annual market workshops. The workshops rotate between the countries within which Emeritus Reinsurance operates. Training is conducted by the skilled and experienced Emeritus Reinsurance staff. Emeritus Reinsurance has also seconded their staff to train at seminars and conferences like OESAI (Organisation of East & South African Insurers & reinsurers), SADC (Southern African Development Community) Insurance Forum amongst others.

In addition to training, Emeritus Reinsurance is also heavily involved in the development of the insurance profession hence it has advocated and sponsored, in partnership with the Institute of Insurance Zimbabwe, the translation of the Certificate of Proficiency in Insurance (COP) manual into Portuguese and the introduction of COP and Diploma in insurance courses in Tswana. It also offers a graduate trainee attachment and/or exchange programs in which young underwriters from its clients can undertake attachment at any of its regional offices.

# Our Commitment to CSR and ESG

At Emeritus Re, we recognize the interconnectedness of environmental, social, and governance (ESG) factors with long-term financial stability. We are, therefore, committed to integrating ESG principles into our core business strategy and strive to be a responsible reinsurance partner for a sustainable future.

## Corporate Social Responsibility (CSR)

**Community Engagement:** We are dedicated to giving back to the communities we serve. We support initiatives that promote social well-being, education, and environmental stewardship. This includes support of various universities and tertiary institutions, support of the vulnerable and underprivileged, and support of various environmental sustainability projects in the markets we operate in.

**Employee Relations:** We foster a diverse and inclusive workplace that prioritizes employee health, safety, and professional development. Our teams across the markets incorporate diversity in language, ethnicity, religious beliefs, and culture. We believe in equal opportunities and promote upward mobility and career growth for all employees, regardless of background.

**Ethical Conduct:** We uphold the highest ethical standards in all our business dealings, fostering transparency and trust with our clients, partners, and stakeholders in line with our values.

## Environmental, Social, and Governance (ESG):

**Environmental Stewardship:** We actively manage our environmental footprint by

reducing energy consumption, minimizing waste, and supporting climate-resilient solutions.

**Social Responsibility:** We promote responsible underwriting practices that consider social and environmental risks alongside financial ones. We strive to integrate ESG factors into our risk assessment models.

**Governance:** We maintain a strong governance framework that emphasizes transparency, accountability, and board diversity. We are committed to complying with all relevant regulations and industry best practices.

By embracing CSR and ESG principles, we aim to:

**Build resilience:** Focusing on ESG factors strengthens our risk management capabilities and positions us for long-term success.

**Attract and retain talent:** A commitment to social responsibility creates a more attractive workplace, fostering employee engagement and loyalty.

**Contribute to a sustainable future:** We recognize our role in supporting a healthy planet and a just society.

## Partnering for a Sustainable Future

We believe that collaboration is key to achieving a sustainable future. We work closely with our clients, partners, and stakeholders to develop innovative solutions that address environmental and social challenges.







# Careers

The company values its human capital as a key enabling resource that provides professional and integrated services to clients. The corporate and leadership culture is oriented towards a high performance culture, team player, adeptness and agility to change management and adaptability to environmental vicissitudes. To this end our staff at all levels undergo continual development to meet the needs of clients and stakeholders.

## Attractive employment opportunities

Emeritus Reinsurance values diversity in skills leveraged on talent and professionalism hence

we offer employment opportunities to professionals, university graduates, students and school leavers. We also offer internship programs to tertiary students. Our remuneration is very competitive and well structured.

## Family and Career Compatibility

We believe in an integrated social life of our workers that blends well in the home-work interface to balance the interest of our workers. This has been the hallmark of our social engagement programs.

# Innovative risk solutions to protect growth & prosperity



Head Office - Emeritus Reinsurance Group  
Plot 115, Unit 6, Kgale Mews  
Gaborone International Finance Park  
P.O Box 404271, Broadhurst, Gaborone, Botswana  
+267 3121041 | +267 3121042

Zimbabwe  
Block D, 2nd Floor, Smatsatsa Office Park  
Stand Number 10667, Borrowdale, Harare, Zimbabwe  
+263 24 2870 762-8

Zambia  
Suite B16 First Floor, Green City, Kelvin Siwale Road Arcades Area,  
P.O Box 50150, Lusaka, Zambia  
+260 211 232820 | 228298

Malawi  
No. 5 Sharpe Road, Namiwawa  
Private Bag 157, Blantyre, Malawi  
+265 1 823 211 | +265 1 823 711

Mozambique  
Av. Da Marginal N° 141/8 | 4º Andar  
Zen Residence Building! C.P. 2382, Maputo, Mozambique  
+258 21 328807 | +258 21 328808 | +258 21 328809

Botswana  
Plot 115, Unit 6, Kgale Mews  
Gaborone International Finance Park  
+267 3121041 | +267 3121042



Emeritus Reinsurance



Emeritus Reinsurance

Email: [emeritus@emeritus.com](mailto:emeritus@emeritus.com) | Website: [www.emeritus.com](http://www.emeritus.com)



**Emeritus**  
Reinsurance